

Travel to Lyon, France's gastronomic mecca with the World of MBI, January 2019 for this exciting international gathering!

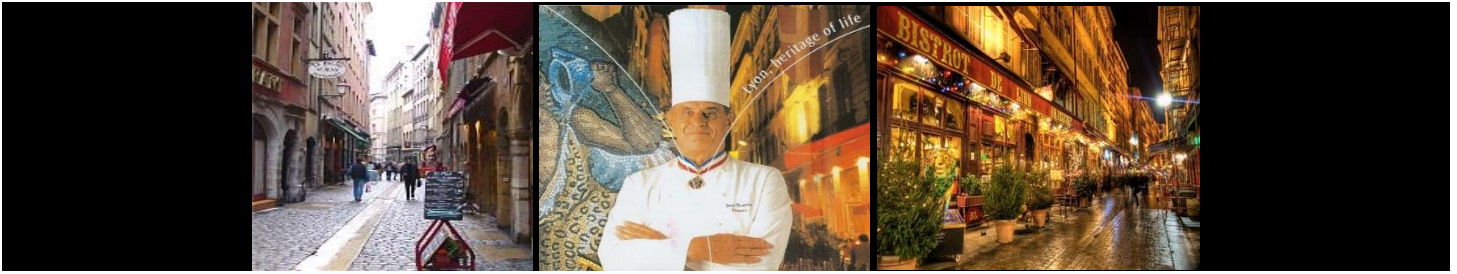


- **SIRHA International Hotel Catering and Food Trade Exposition:** *Saturday, January 26-30*  
This exposition, dedicated to food products, equipment and services for professionals, Sirha embodies the global market for catering, hospitality and food service trades.
- **International Catering Cup:** *Saturday, January 26*  
Chef Jason Hall, CMC, Executive Chef, Myers Park Country Club, Charlotte, NC & Chef George Castaneda, Sodexo – North America, Nashville, TN will compete representing the United States. In 2015 Chef George Castaneda and Chef Greg Mueller were the first ever to represent the U.S. in this competition and finished in 2<sup>nd</sup> place. The 2017 ICC team included Coach Chef Steve Jilleba, CMC, Michel Bouit, International Judge and Liz Bergin, Marketing Director.
- **World Pastry Cup - Coupe du Monde de la Patisserie:** *Sunday January 27 & Monday January 28*  
A breathtaking show of technical excellence, taste, balance and artistic creativity. A team of 3 - chocolate chef, pastry chef and ice carver chef, will have 10 hours to prepare and present their creations of more than 20 pieces in sugar, chocolate and ice sculpture to the judges. 23 countries competed in Lyon in 2017 for the World Champion title won by?  
Sugar artist Chef Nicolas Chevrieux, chocolatier Chef Olivier Saintmarie, and ice sculptor Chef Victor Dagatan along with one alternate, Chef Jordan Snider were selected at Grand Rapids Community College this past August to represent the United States in Lyon in 2019.
- **Bocuse d'Or World Cuisine Contest:** *Tuesday January 29 & Wednesday January 30*  
Beyond those ever more breathtaking and original culinary creations, the contest has become over the years a fabulous springboard, which propels the most promising chefs to the top in the world of gastronomy. Created by Paul Bocuse in 1987, Bocuse d'Or celebrated 30 years in 2017. Chef Matthew Kirkley, Coi in San Francisco and Commis Mimi Chen, Restaurant Daniel in New York will be representing the United States in Lyon in 2019.

**LAND PACKAGE ITINERARY INCLUDES:**

- 5-night hotel accommodations, double or single occupancy at Ibis Lyon Centre Perrache, arrival Saturday January 26; departure Thursday January 31
- Airport transfers
- Daily breakfast
- Tramway tickets & daily pass to attend the competitions and SIHRA
- Guided visits of Lyon, Halle de Lyon & Bernachon Chocolatier
- All taxes & tips

*"Since 1991 we have been creating and leading its customized VIP itineraries to be part of the excitement surrounding the competitions in beautiful Lyon. Our culinary travel adventures are meticulously crafted from our many years of travel and personal research, resulting in a high quality trip from beginning to end. We look forward to traveling with you. It will be an amazing culinary & cultural experience!" Michel & Liz*



## Reservations

Name (1) \_\_\_\_\_  
(EXACTLY AS LISTED ON PASSPORT)

Name (2) \_\_\_\_\_  
(EXACTLY AS LISTED ON PASSPORT)

Address \_\_\_\_\_

City/State/Zip \_\_\_\_\_

Tel or Cell# \_\_\_\_\_

Email \_\_\_\_\_

Chef coat size: \_\_\_\_\_ Unisex coat sizes: Small - Medium - Large - XL - 1XL - 2XL - 3XL

**Land package only (no airfare included)**

- \_\_\_\_\_ \$1,995. per person, double occupancy - standard room
- \_\_\_\_\_ \$2,145. per person, double occupancy - superior room
- \_\_\_\_\_ \$2,295. per person, single occupancy - standard room only

A \$500. per person deposit is required to secure reservation. Final trip balance is due 60 days prior to departure. A confirmation will be mailed upon receipt.

\_\_\_ Check payable to MBI, Inc. *preferred*    \_\_\_ Visa    \_\_\_ MC    \_\_\_ AE *credit card payments - 5% fee*

Card # \_\_\_\_\_ Exp. \_\_\_\_\_ Security Code \_\_\_\_\_

Cardholder Signature \_\_\_\_\_

Credit card payments can be emailed or securely faxed to 773-649-9179  
Mail: MBI, Inc. 4428 N. Malden, St. Chicago, IL 60640  
Contact us for any additional information 773-769-1790 email [mbi@worldofmbi.com](mailto:mbi@worldofmbi.com)

- Round-trip airfare can be easily arranged through MBI
- Extended stays in Lyon, Paris or other cities in France or Europe can be arranged by MBI
- A Passenger Travel Protection Plan is available upon request from MBI and is recommended



<https://www.tripassure.com/main/>